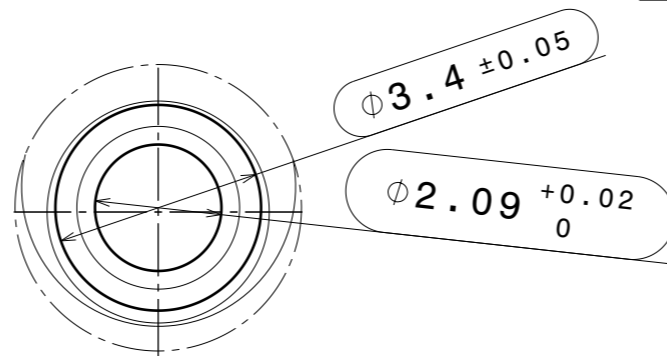
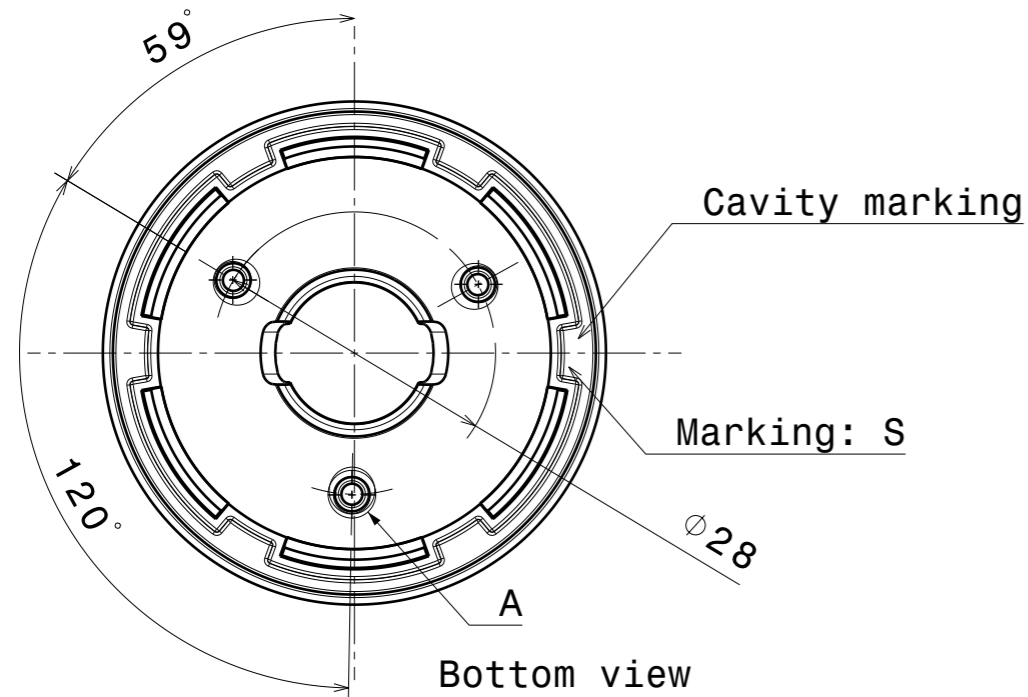
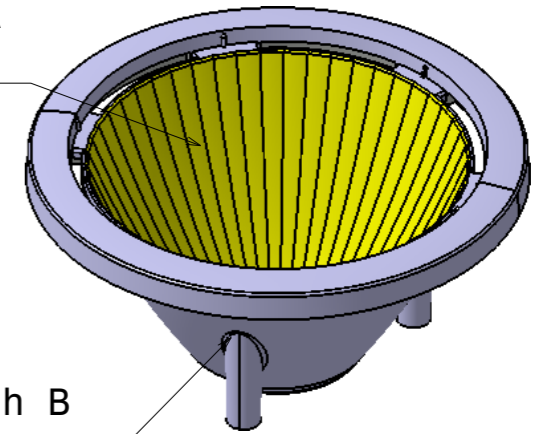


REV	DATE	DESCRIPTION	DONE BY
003	5.11.2012	Tolerance of press-fit shaft inner diameter changed.	as
004	01.09.2016	Beam width marking added	as



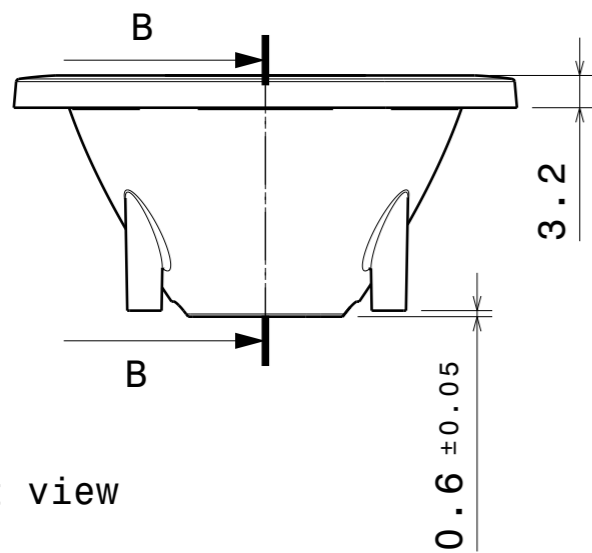
Surface finish A
(Yellow areas)



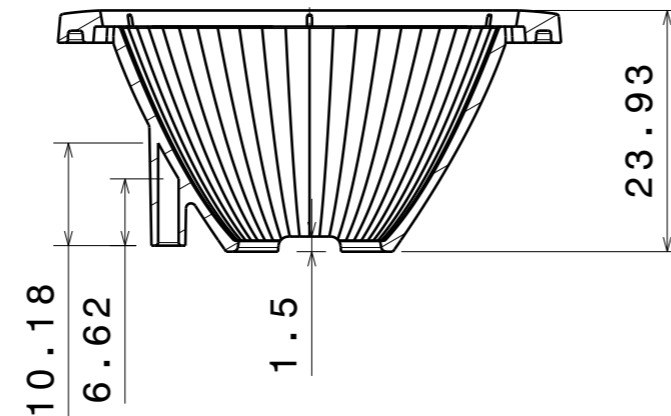
Surface finish B
(Other areas)

Isometric view

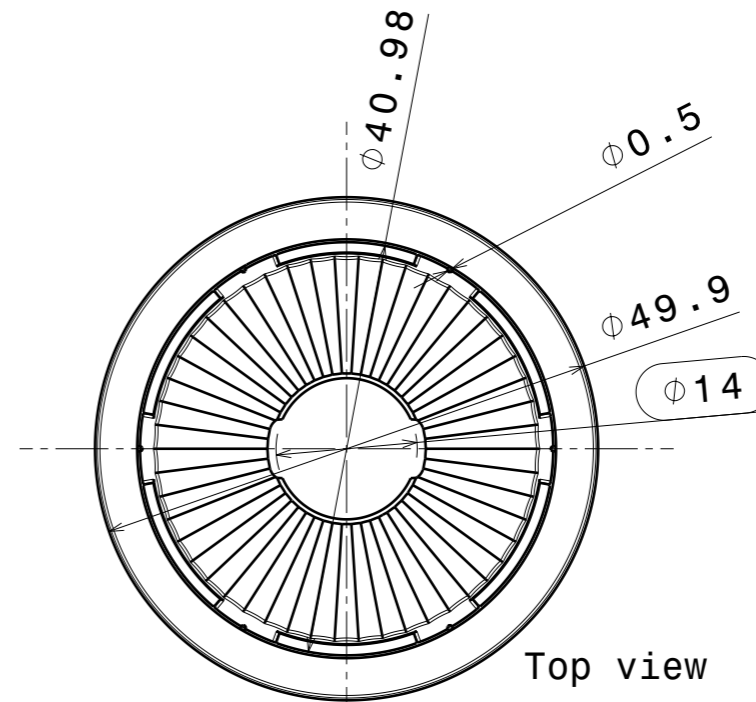
Detail A



Front view



Section view B-B



Top view

INDEX	PART NO	DESCRIPTION	MATERIAL	COLOUR
1	C13085	MIRELLA-50-S-PF	PC-Makrolon 2407	metal

LEGEND

1	Inspectional dimensions marked with:
2	See CAD file for detailed geometry information. Surface finishing markings are only shown in drawing level.
Surface finish:	-
Finish specifications:	A: SPI-A1, polished B: SPI-B1

LEDiL PROPRIETARY This drawing is the property of LEDiL Oy. It may not be reproduced, copied or communicated without a written agreement with LEDiL Oy.

Tolerances if not otherwise shown
According to DIN ISO 2768-1
Linear measures:
Up to 30mm class F, otherwise class M.
According to DIN ISO 2768-2
Form and position: class K
Control for SPC marked dimensions.

LEDiL

Ledil Oy
Salorankatu 10
FIN 24240 SALO
Finland

THIRD ANGLE PROJECTION:

DRAWING TITLE
C13085_MIRELLA-50-S-PF

DRAWN BY
arsu.siuuvti
DATE
1.9.2016
CHECKED BY
teemu.heinonen
DATE
DESIGNED BY
as
DATE

SIZE	PART NUMBER	REV
A3	C13085	004
SCALE	4:3	WEIGHT
		4,69 g
SHEET	1/1	